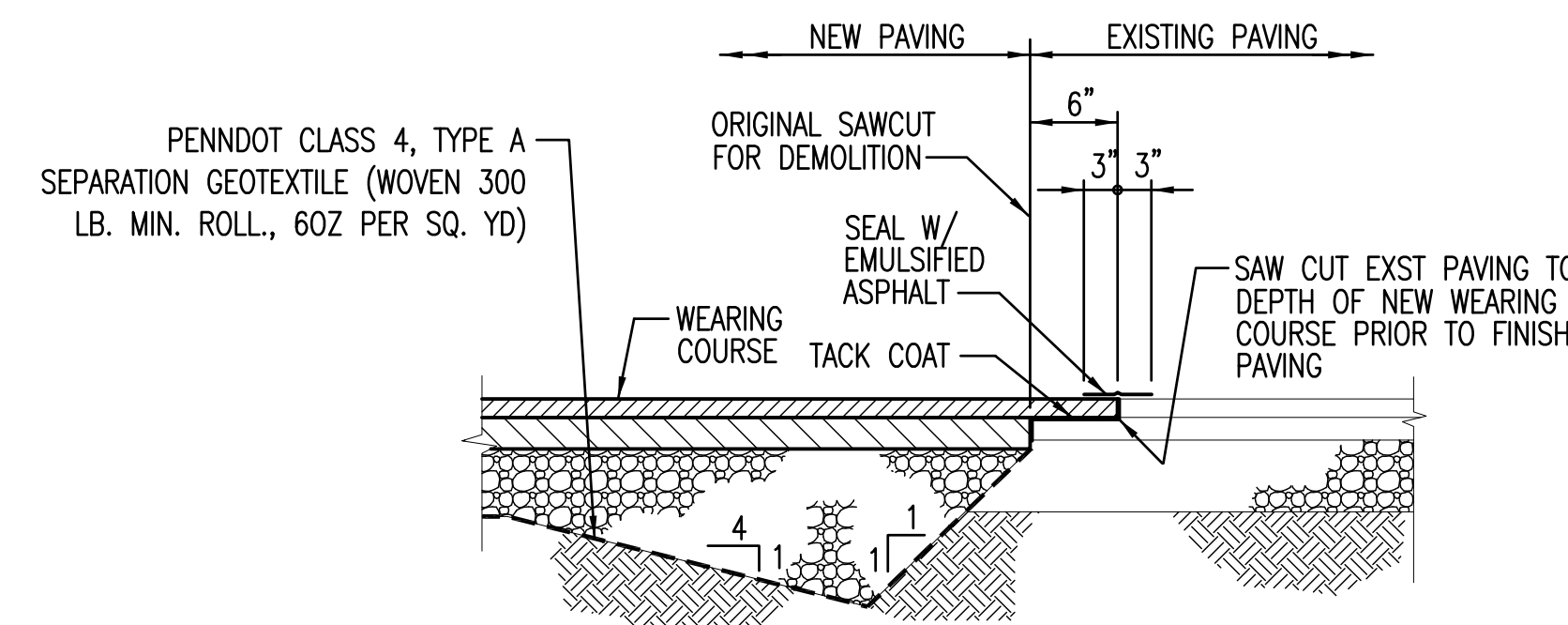
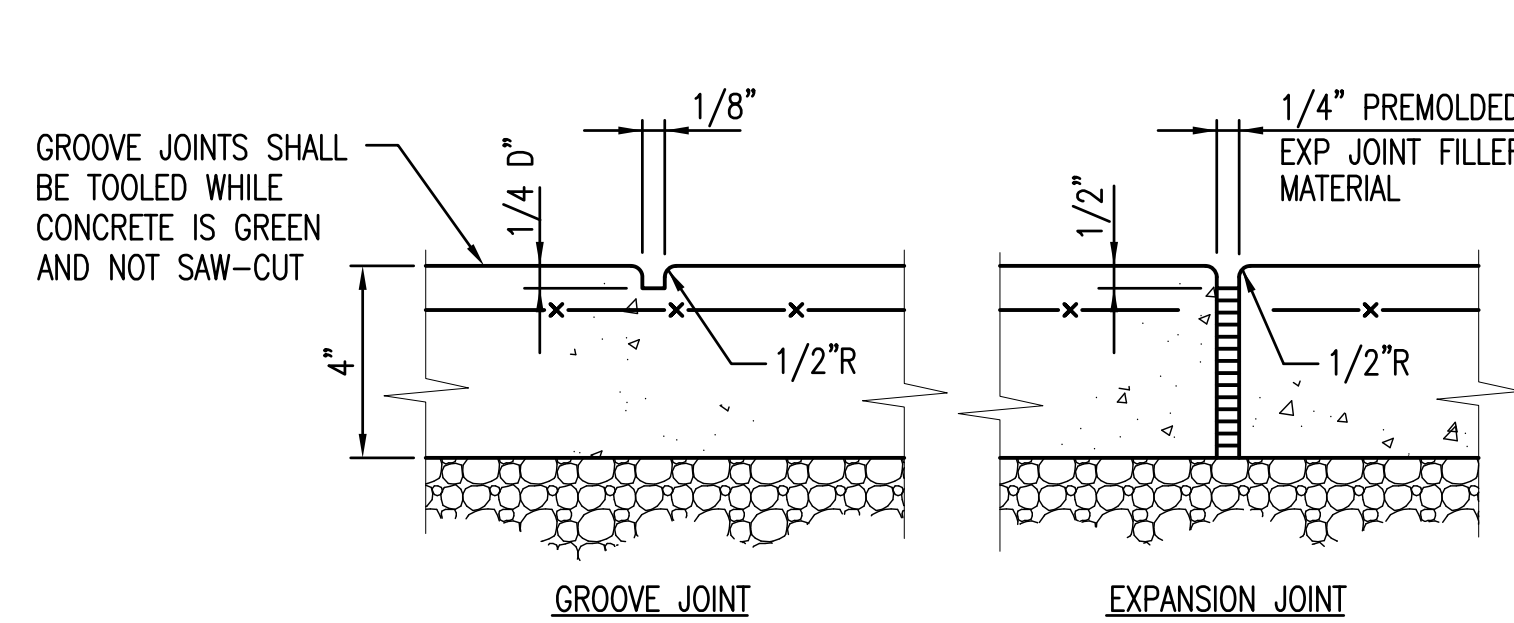
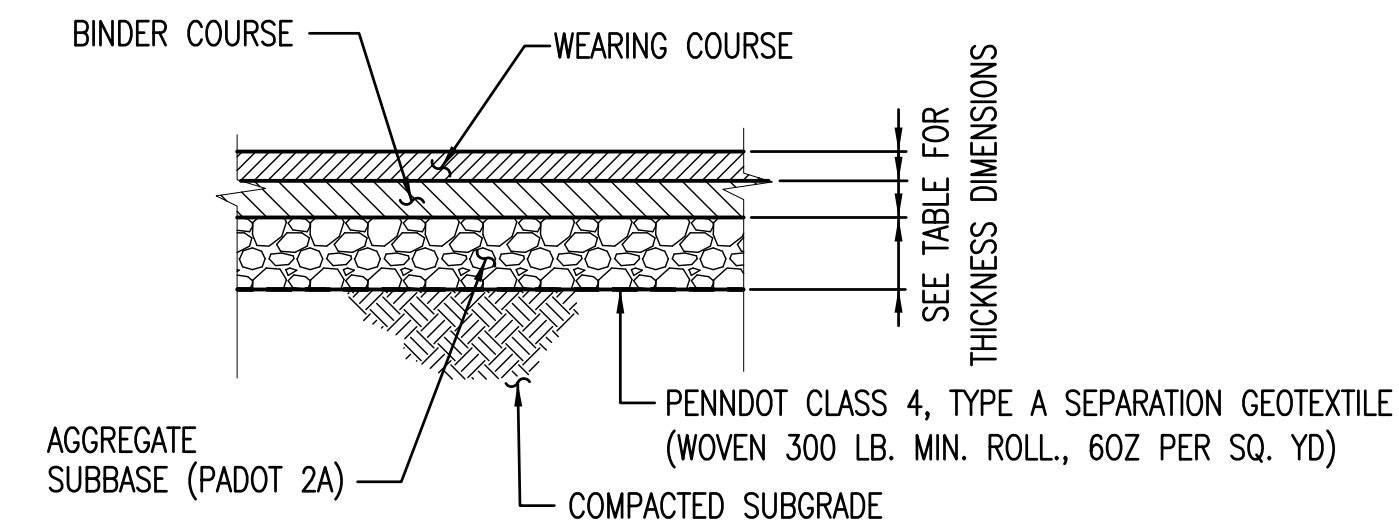


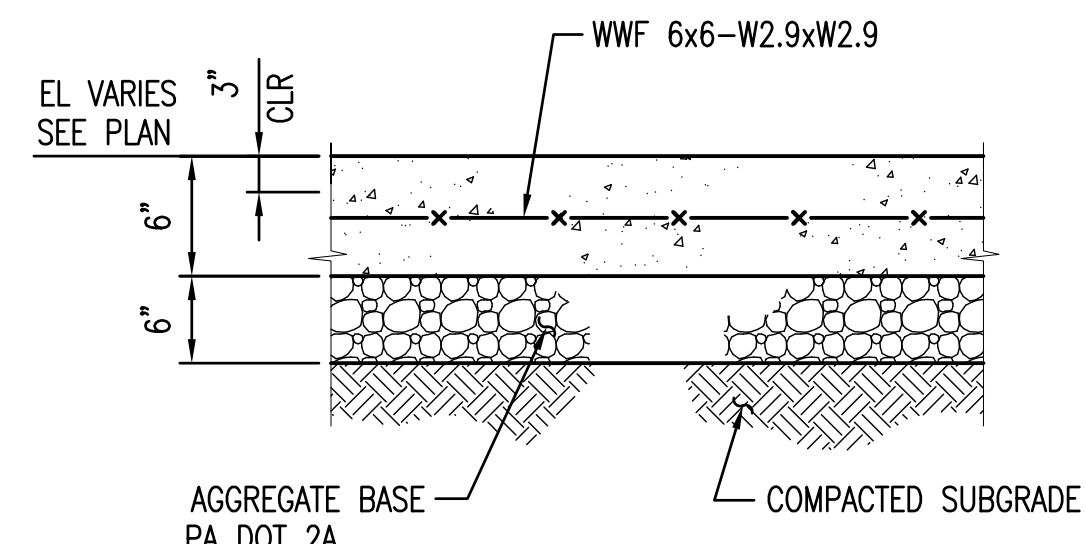
NOTE:
PROVIDE TRANSVERSE GROOVE JOINTS @ 5'-0" OC (MAX) AND EXPANSION
JOINTS @ 20'-0" OC (MAX) AND WHERE ABUTTING CURBS, STRUCTURES,
AND EXISTING CONCRETE PAVEMENT.



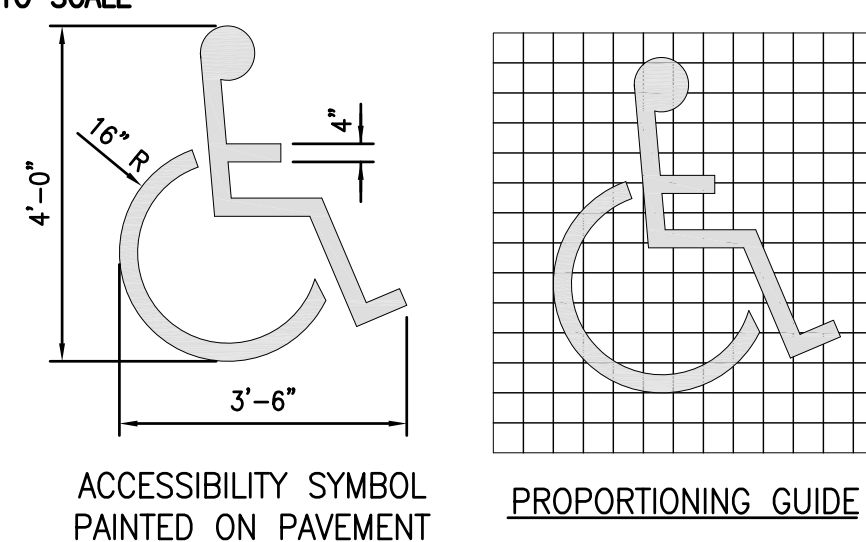
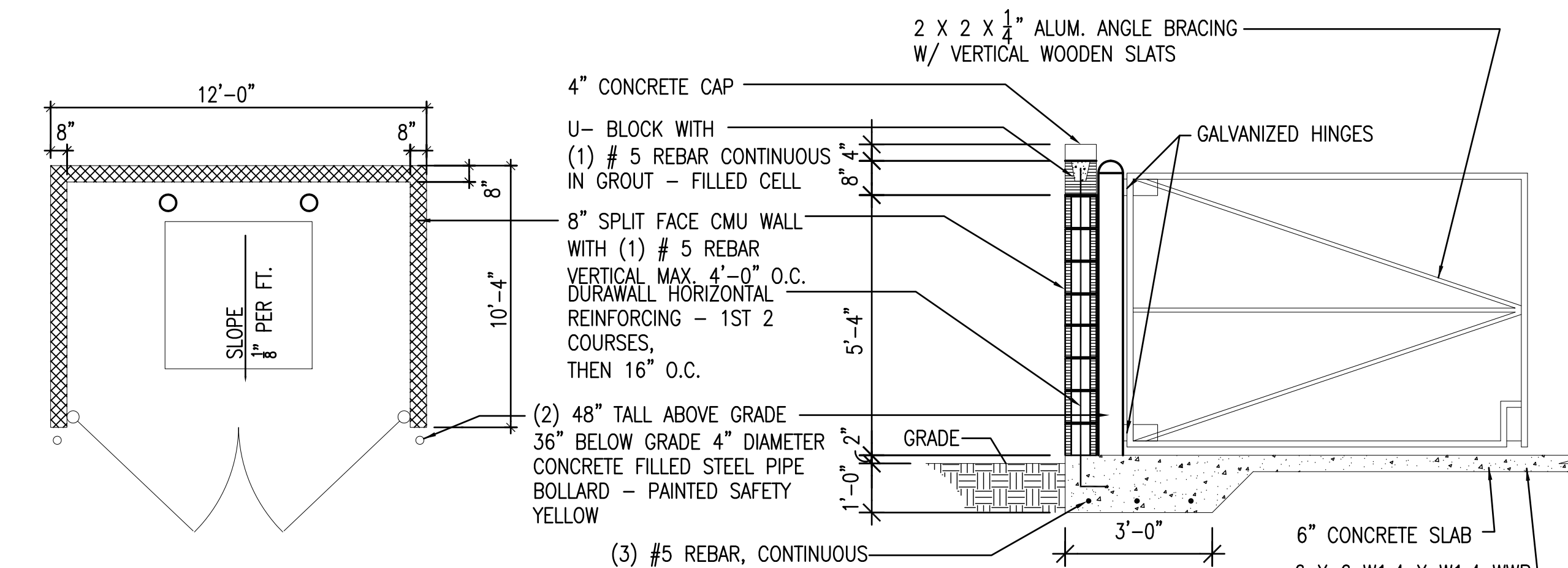
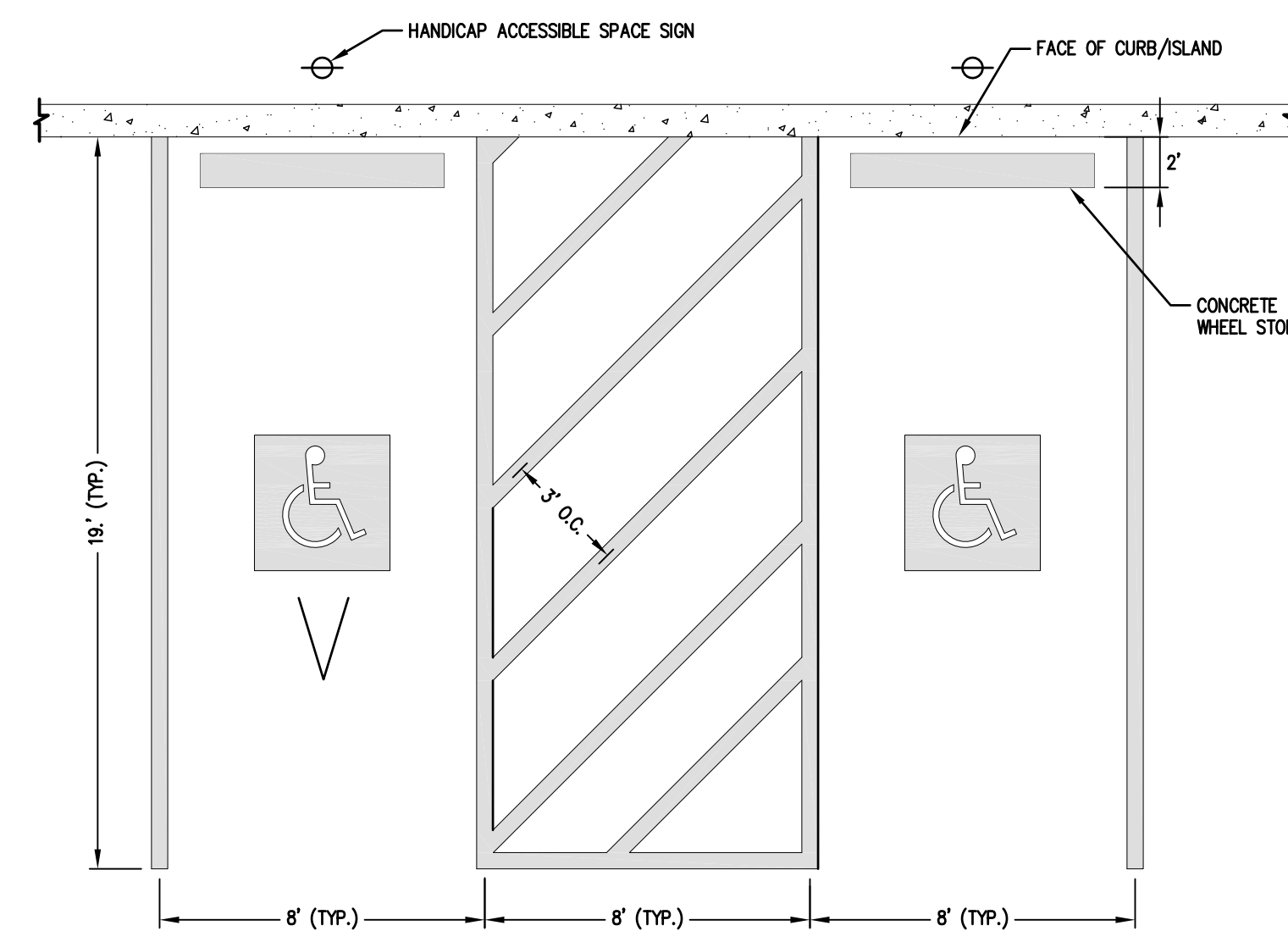
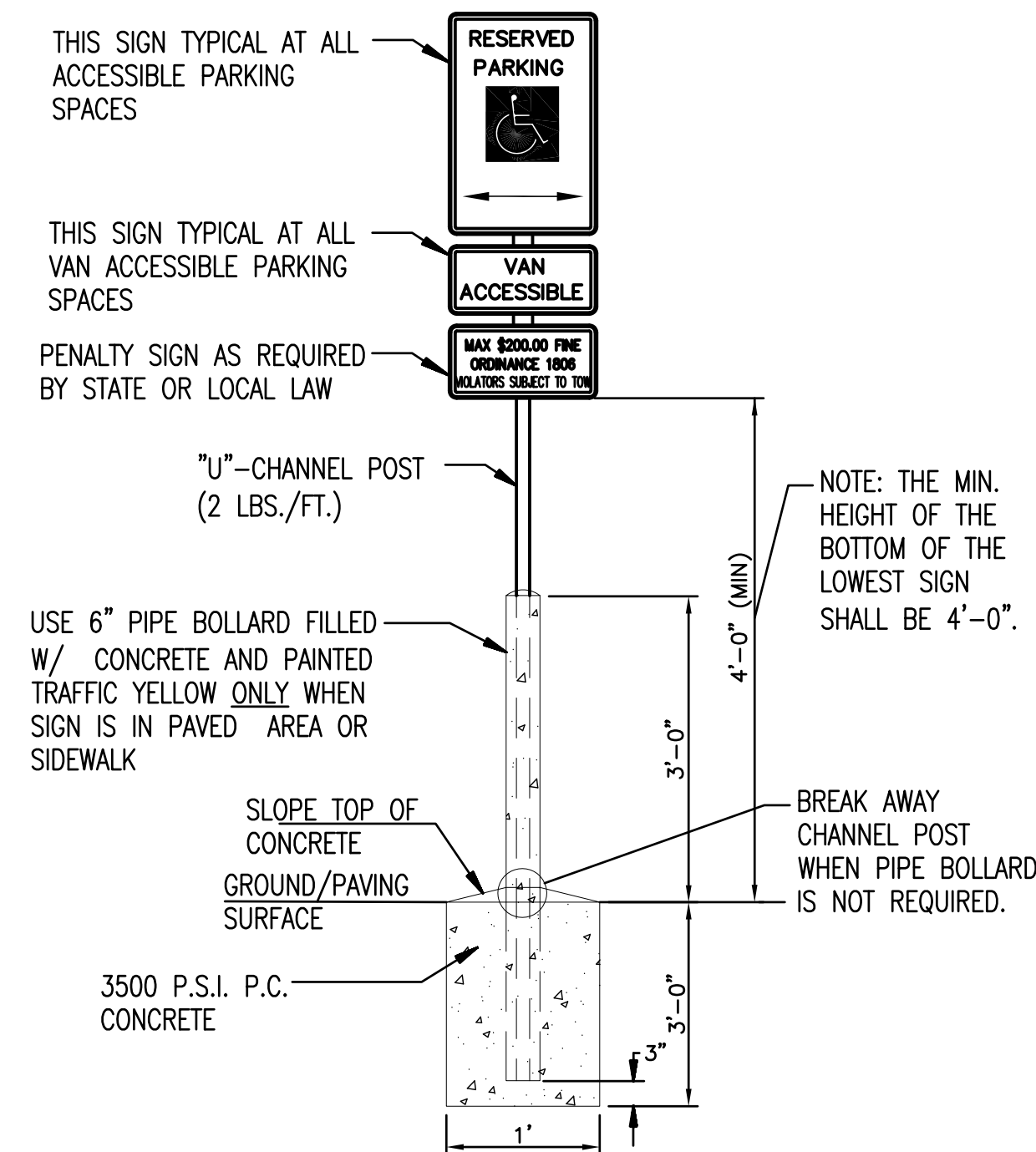
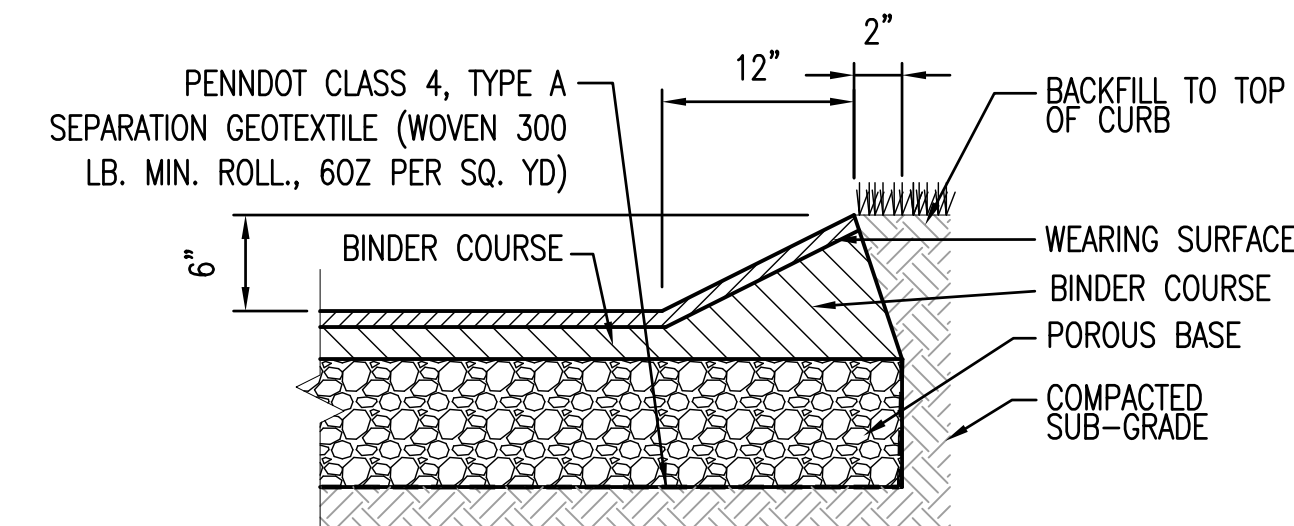
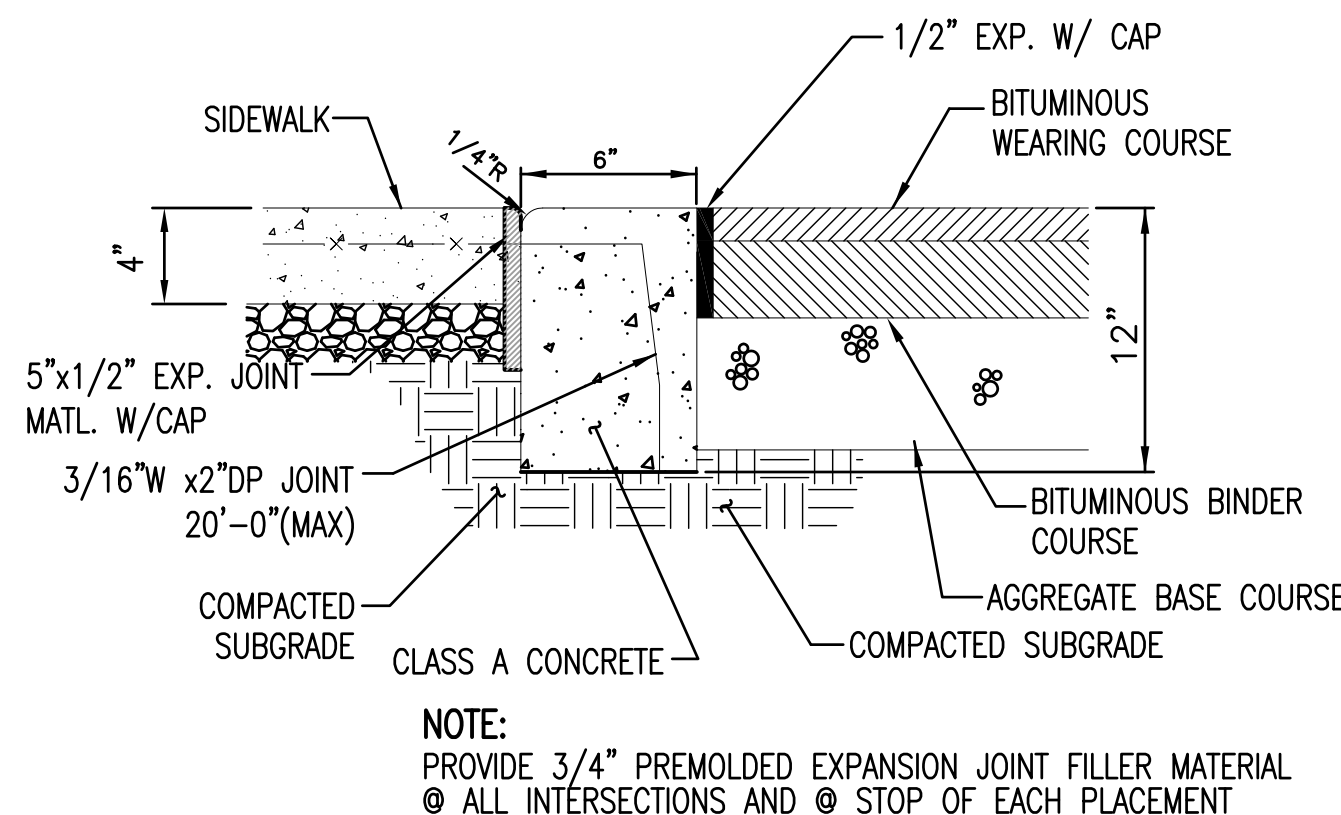
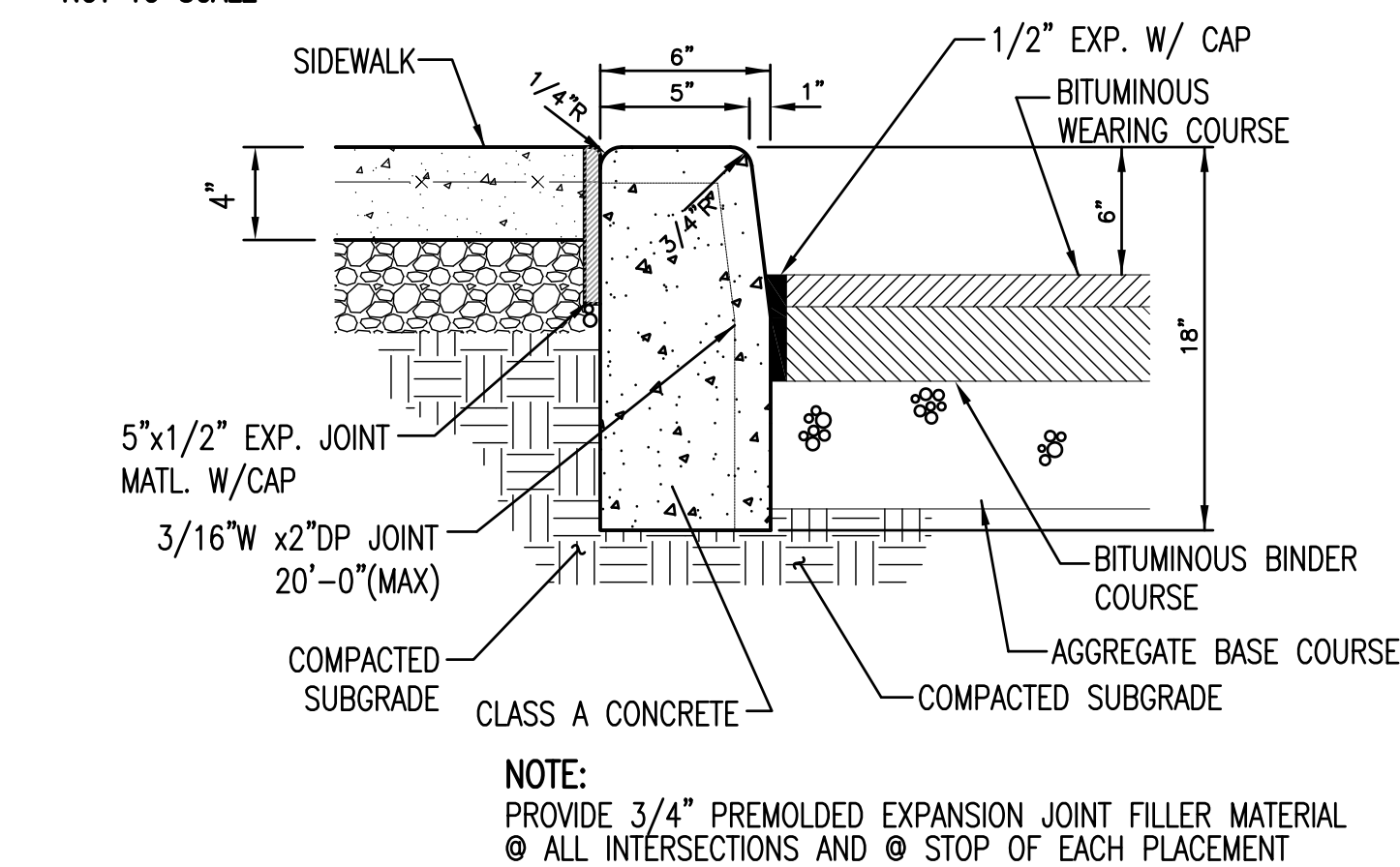
PAVEMENT MATERIALS	COMPACTED LAYER THICKNESS (INCHES) FOR INDICATED TRAFFIC CONDITION	
	MEDIUM DUTY DRIVE LANE ACCESS	LIGHT DUTY PARKING AREAS
SURFACE COURSE ASPHALT 9.5mm SUPERPAVE	1.5	1.5
BASE OR BINDER COURSE ASPHALT 25mm SUPERPAVE	3.0	3.0
STONE AGGREGATE BASE (2A)	6.0	4.0
TOTAL PAVEMENT THICKNESS (IN)	10.5	8.5



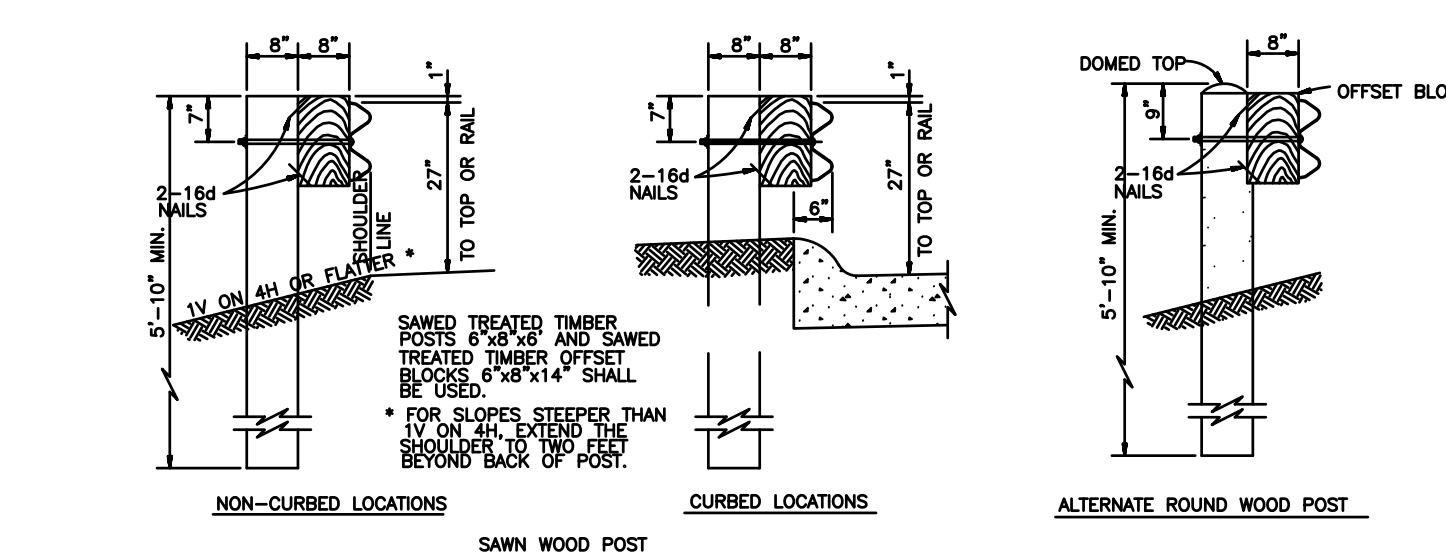
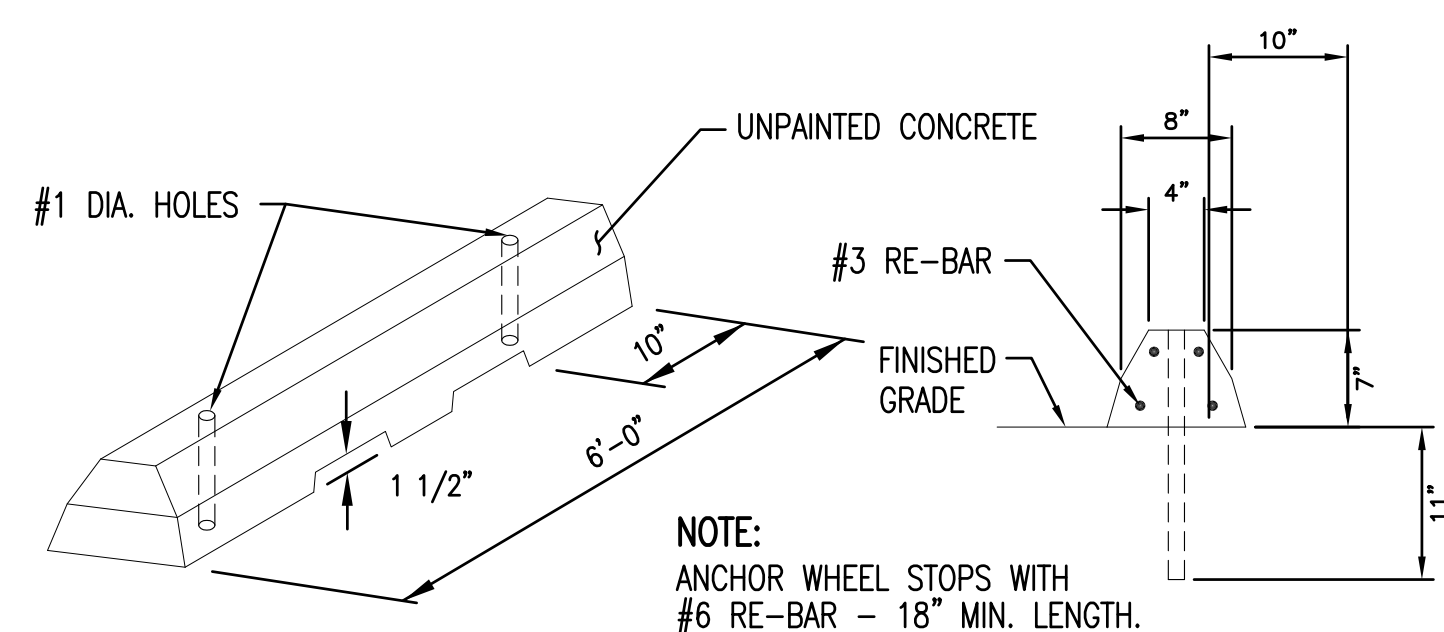
NOTES:
 -FULL PAVEMENT SECTION DEPICTED IF NECESSARY FOR FULL DEPTH RESTORATION OTHERWISE ID-2 WEARING COURSE TO BE PLACED PER GRADING PLAN.
 -THE SUBGRADE MUST BE INSPECTED BY THE BOROUGH OF NEW STANTON PRIOR TO PLACING THE BINDER COURSE.



NOTE:
FULL PAVEMENT SECTION DEPICTED IF NECESSARY FOR FULL
DEPTH RESTORATION OTHERWISE 10-2 WEARING COURSE TO
BE PLACED PER GRADING PLAN.

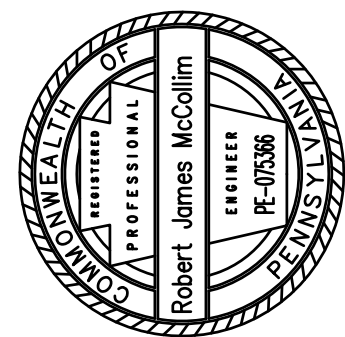


NOTES:
PROVIDE 2 COATS OF BLUE PAINT, ALLOWING
1 WEEK MINIMUM BETWEEN COATS.



**RED II
SWING
GROUP**

4154 OLD WILLIAM PENN HIGHWAY
SUITE 300
MURRYSVILLE, PA 15668
OFFICE: 724-325.1215
FAX: 866.295.5226



ACKNOWLEDGEMENT OR "SIGN-OFF" BY PARTIES TO THE CONSTRUCTION DRAWINGS DOES NOT CONSTITUTE ALTERATION OF LEASE TERMS. THE INFORMATION CONTAINED IN THIS SET OF DOCUMENTS IS PROPRIETARY BY NATURE. ANY USE OR DISCLOSURE OTHER THAN THAT WHICH RELATES TO CLIENT NAME IS STRICTLY PROHIBITED. IT IS A VIOLATION OF LAW FOR ANY PERSON, UNLESS THEY ARE WORKING UNDER THE DIRECTION OF A LICENSED PROFESSIONAL ENGINEER, TO ALTER THIS DOCUMENT.

HAMPTON INN & SUITES
BAIR BOULEVARD
NEW STANTON, PA 15672
WESTMORELAND COUNTY, PENNSYLVANIA

[illegible]

PROJ NO: 1511
SCALE: AS SHOWN
DATE: 5/18/2016
DESIGNED BY: RJM
DRAWN BY: MJN
CHECKED BY: CKM
SHEET TITLE:

SHEET NO. C2.4